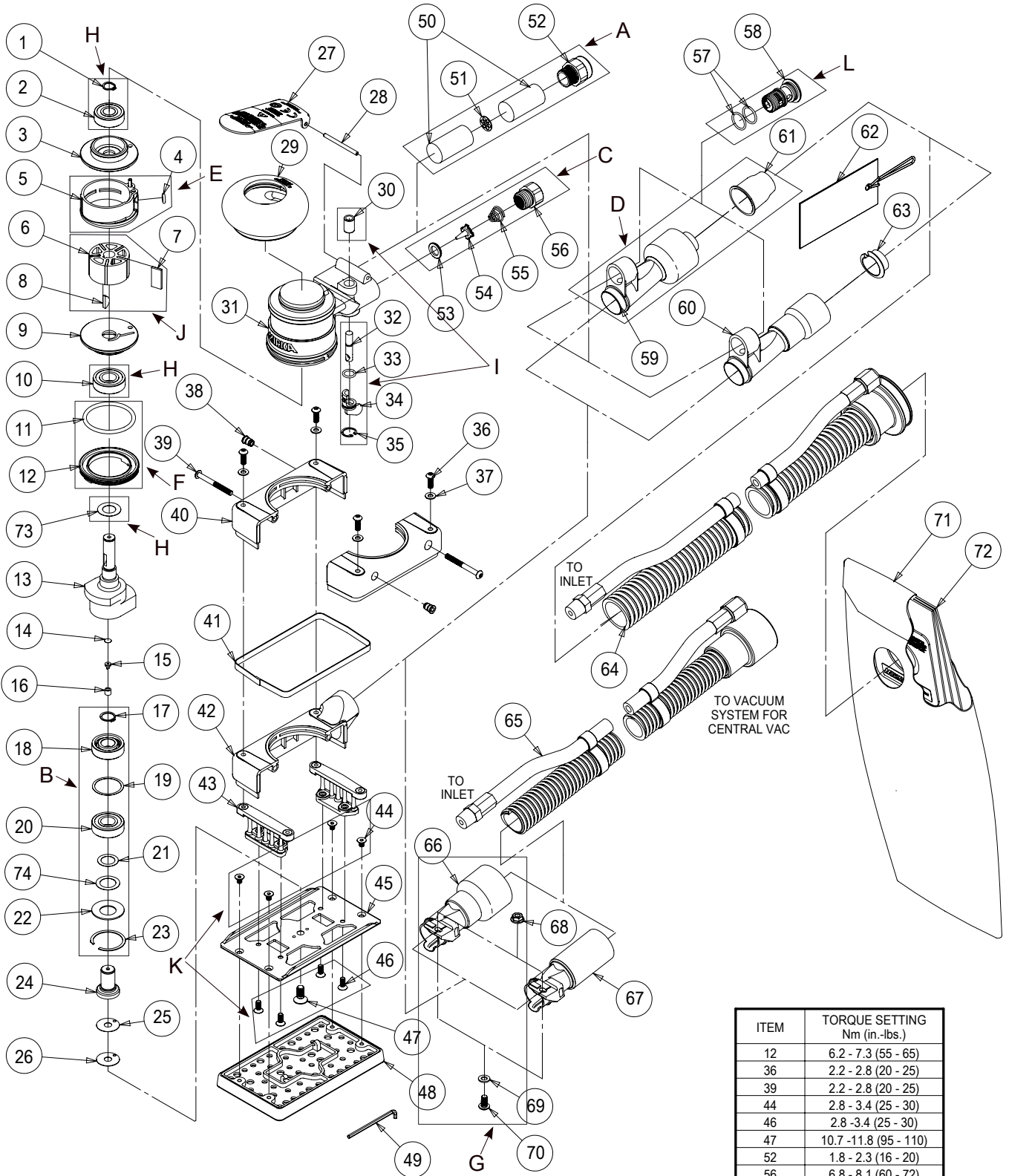


Exploded view of OS 353, 81 x 133 mm

Updated 01.12.2016



ITEM	TORQUE SETTING Nm (in.-lbs.)
12	6.2 - 7.3 (55 - 65)
36	2.2 - 2.8 (20 - 25)
39	2.2 - 2.8 (20 - 25)
44	2.8 - 3.4 (25 - 30)
46	2.8 - 3.4 (25 - 30)
47	10.7 - 11.8 (95 - 110)
52	1.8 - 2.3 (16 - 20)
56	6.8 - 8.1 (60 - 72)
58	4.0 - 5.4 (36 - 48)
70	3.4 - 3.9 (30 - 35)

OS 353, 81x133 mm Kits

Mirka code	Item	Description	Kit	Part No	QTY	
8993017211		Muffler Kit 10 000 rpm		MPA0805		
	50	Muffler	A	MPA0032	2	
	51	Plate		MPA0038	1	
	52	Muffler Housing		MPA0166	1	
8993019411	OS Spindle Bearing Kit			MPA0806		
8993019411	17	Retaining Ring		MPA0090	1	
	18	Bearing		MPA0035	1	
	19	Shim		MPA0193	1	
	20	Bearing	B	MPA0020	1	
	21	Shim		MPA0016	1	
	22	Washer		MPA0017	1	
	23	Retaining Ring		MPA0018	1	
	74	Spindle Bearing Dust Shield		MPA2542	1	
8993018811	Air Inlet Kit			MPA0798		
8993018811	53	Valve Seat			MPA0009	1
	54	Valve		C	MPA0007	1
	55	Valve Spring	MPA0014		1	
	56	1/4-18 Npt Inlet Bushing Assembly	MPA0013		1	
8993011311	DB Swivel Fitting 28 mm Kit		MPA0932			
8993011311	59	28 mm (1 In.) Hose Supervac™ DB Swivel Exhaust Assembly (Standard For DB))	D	MPA0410	1	
	61	28mm (1 In.) Hose Seal		MPA0778	1	
8993009211	Cylinder And O-Ring Kit		MPA0994			
8993009211	4	5 mm x 2.0 mm O-Ring	E	MPA0042	1	
	5	Cylinder Assembly		MPA0005	1	
8993007911	Lock Ring And O-Ring Kit		MPA0993			
8993007911	11	39.4 mm x 3.1 mm O-Ring	F	MPA0045	1	
	12	Lock Ring		MPA0001	1	
8991600311	CV Swivel Fitting Kit 28 mm		MPA3207			
8991600311	66	Supervac™ CV 28 mm (1 In.) CV Swivel Exhaust		MPA0092	1	
	68	M5 x 0.8 Flanged Nut	G	MPA0048	1	
	69	M5 Washer		MPA0047	1	
	70	Hex Socket Button Head Machine Screw M5 x 10		MPA0769	1	
8993019811	Endplate Bearing Kit			MPA0799		
8993019811	1	External Retaining Ring		MPA0040	1	
	2	10 x 26 x 8 Bearing - 2 Shields	H	MPA0021	1	
	10	12 x 28 x 8 Bearing - 2 Shields		MPA0019	1	
	73	Front Bearing Dust Shield		MPA2541	1	
8993019011	Speed Valve Kit			MPA0800		
8993019011	30	Valve Sleeve		MPA0015	1	
	32	Valve Stem Assembly	I	MPA0008	1	
	33	9 mm x 1.5 mm O-Ring		MPA0043	1	
	34	Speed Control		MPB0014	1	
	35	Internal Retaining Ring		MPA0039	1	
8993017711	Rotor, Vanes And Key Kit			MPA0801		
8993017711	6	Machined Rotor	J	MPB0005	1	
	7	Vane		MPA0010	5	
	8	3 mm x 13 mm Woodruff Key		MPA0041	1	

OS 353, 81x133 mm Kits

Mirka code	Item Description	Kit	Part No	QTY
8993015511	Screw Kit		MPA1672	
	44 Screws	K	MPA0766	4
	46 Screws		MPA0767	4
	47 Screw		MPA0078	1
8991600911	Retainer & O-Ring Kit For DB		MPA2697	
	57 14.0 x 1.5 O-Ring	L	MPA0044	2
	58 Retainer DB		MPA0722	1
8991821311	Shaft Balancer Kit		MPA2191	
	13 3 mm (1/8 In.) Orbit Airshield™ Shaft Balancer		MPB0179	1
	14 Filter	x	MPA0122	1
	15 Check Valve		MPA0121	1
	16 Retainer		MPA0120	1
8991610711	Lever Kit 3,0 mm Orbit		MPA1730	
	27 Lever	x	MPA1697	1
	28 Pin		MPA0031	1
8993011411	DB Swivel Fitting 19 mm Kit		MPA0858	OPT.
	60 19 mm (¾ In.) Hose Supervac™ DB Swivel Exhaust Assembly (Optional For DB)	x	MPA0409	1
	63 19mm (3/4 In.) Hose Seal		MPA0854	1

Separate parts on next page

OS 353, 81x133 mm Spare parts

Mirka code	Item	Description	Kit	Part No	QTY
	1	External Retaining Ring	H	MPA0040	1
	2	10 x 26 x 8 Bearing - 2 Shields	H	MPA0021	1
8993009311	3	Rear Endplate		MPB0017	1
	4	5 mm x 2.0 mm O-Ring	E	MPA0042	1
	5	Cylinder Assembly	E	MPA0005	1
	6	Machined Rotor	J	MPB0005	1
	7	Vane	J	MPA0010	5
	8	3 mm x 13 mm Woodruff Key	J	MPA0041	1
8993009411	9	Front Endplate		MPB0016	1
	10	12 x 28 x 8 Bearing - 2 Shields	H	MPA0019	1
	11	39.4 mm x 3.1 mm O-Ring	F	MPA0045	1
	12	Lock Ring	F	MPA0001	1
	13	3 mm (1/8 In.) Orbit Airshield™ Shaft Balancer	x	MPB0179	1
	14	Filter	x	MPA0122	1
	15	Check Valve	x	MPA0121	1
	16	Retainer	x	MPA0120	1
	17	Retaining Ring	B	MPA0090	1
	18	Bearing	B	MPA0035	1
	19	Shim	B	MPA0193	1
	20	Bearing	B	MPA0020	1
	21	Shim	B	MPA0016	1
	22	Washer	B	MPA0017	1
	23	Retaining Ring	B	MPA0018	1
8991802411	24	Spindle Assembly		MPA0113	1
	25	Spacer (0,2 mm thick)		MPA0079	OPT.
8991601011	26	Spacer (0,4 mm thick)		MPA0080	1
	27	Lever	x	MPA1697	1
	28	Pin	x	MPA0031	1
8993013811	29	65 mm (2 1/2 In.) Grip (Optional)		MPA0288	OPT.
	29	70 mm (2 3/4 In.) Grip (Optional)		MPA0289	OPT.
8993013511	29	75 mm (3 In.) Grip (Standard))		MPA0290	1
	30	Valve Sleeve	I	MPA0015	1
8993006811	31	Housing		MPA0227	1
	32	Valve Stem Assembly	I	MPA0008	1
	33	9 mm x 1.5 mm O-Ring	I	MPA0043	1
	34	Speed Control	I	MPB0014	1
	35	Internal Retaining Ring	I	MPA0039	1
8991800911	36	Screws		MPA0768	4
8991800411	37	Washer		MPA0076	4
8991800511	38	Threaded Insert		MPA0071	2
8991800611	39	Screws		MPA0770	2
8991804011	40	Shroud (Right Hand And Nv Left Hand)		MPD0004	2
8991800311	41	Shroud Seal		MPA0444	1
8991800811	42	CV/DB Shroud		MPD0005	1
8991608911	43	Pad Support Assembly		MPC0089	2
	44	Screws	K	MPA0766	4
8991800211	45	Pad Backing		MPC0115	1
	46	Screws	K	MPA0767	4

OS 353, 81x133 mm Spare parts

Mirka code	Item	Description	Kit	Part No	QTY
	47	Screw	K	MPA0078	1
8295350111	48	Backing Pad 81x133mm Grip 54H			1
8991608011	49	Hex Wrench 2.5 mm (Supplied With Each Tool)		MPA0864	1
	50	Muffler	A	MPA0032	2
	51	Plate	A	MPA0038	1
	52	Muffler Housing	A	MPA0166	1
	53	Valve Seat	C	MPA0009	1
	54	Valve	C	MPA0007	1
	55	Valve Spring	C	MPA0014	1
	56	1/4-18 Npt Inlet Bushing Assembly	C	MPA0013	1
	57	14.0 x 1.5 O-Ring	L	MPA0044	2
	58	Retainer DB	L	MPA0722	1
	59	28 mm (1 In.) Hose Supervac™ DB Swivel Exhaust Assembly (Standard For DB))	D	MPA0410	1
	61	28mm (1 In.) Hose Seal	D	MPA0778	1
	60	19 mm (¾ In.) Hose Supervac™ DB Swivel Exhaust Assembly (Optional For DB)	x	MPA0409	1
	63	19mm (¾ In.) Hose Seal	x	MPA0854	1
	62	19mm (¾ In.) Hose Seal Tag		MPA0856	OPT.
		28mm (1 In.) Hose Seal Tag		MPA0931	1
8993006711	64	ø 28 mm (1 in.) vac hose to ø 28 mm (1 in.) double bag fitting and airline assy. (std for db) incl.: MPA0034 ø 28 mm (1 in) x 1.8 m (6 ft) vacuum hose, MPB0123 ø 28 mm (1 in) hose to double bag vacuum fitting, MPA0033 ø 6.3 mm (¼ in) x 1.8 m (6 ft) airline with fittings, MPA0027 bungee for ø 6.3 mm (¼ in.) airline & ø 28 mm (1 in.) vacuum hose (5)		MPA0412	1
8993041111		ø 19 mm (¾ in.) vac hose to ø 19 mm (¾ in.) double bag fitting and airline assembly (opt. for db) incl.: MPA0200 ø 19 mm (¾ in) x 1.5 m (5 ft) vacuum hose, MPB0133 ø 19 mm (¾ in) hose to double bag vacuum fitting, MPA0302 ø 6.3 mm (¼ in) x 1.5 m (5 ft) airline with fittings, MPA0301 bungee for ø 6.3 mm (¼ in) airline & ø 19 mm (¾ in) vacuum hose (5)		MPA0411	OPT.
8993306711	65	ø 19 mm (¾ in.) vac hose to ø 19 mm (¾ in.) x ø 28 mm (1 in.) hose adapter coupling and airline assembly includes: MPA0200 ø 19 mm (¾ in.) x 1.5 m (5 ft.) (¾ in.) hose x 28 mm (1 in.) hose adapter, MPA0302 ø 6.3 mm (¼ in.) x 1.5 m (5 ft.) airline with fittings, vacuum hose, MPB0088 19 mm MPA0301 bungee for ø 6.3 mm (¼ in.) airline & ø 19 mm (¾ in.) vacuum hose (5)		MPA0300	OPT.
8991600311	66	Supervac™ CV 28 mm (1 In.) CV Swivel Exhaust	G	MPA0092	1
	68	M5 x 0.8 Flanged Nut	G	MPA0048	1
	69	M5 Washer	G	MPA0047	1
	70	Hex Socket Button Head Machine Screw M5 x 10	G	MPA0769	1
8991600211	67	Supervac™ CV 19 mm (¾ In.) CV Swivel Exhaust Assembly		MPA1239	OPT.
8993010211	68	M5 x 0.8 Flanged Nut		MPA0048	1
8993009911	69	M5 Washer		MPA0047	1
8993010111	70	Hex Socket Button Head Machine Screw M5 x 10		MPA0769	1
8993206011	71	Dustbag Nylon		MPA0658	1
8993206511	72	Dustbag Paper		MPA0465	1
	73	Front Bearing Dust Shield	H	MPA2541	1
	74	Spindle Bearing Dust Shield	B	MPA2542	1