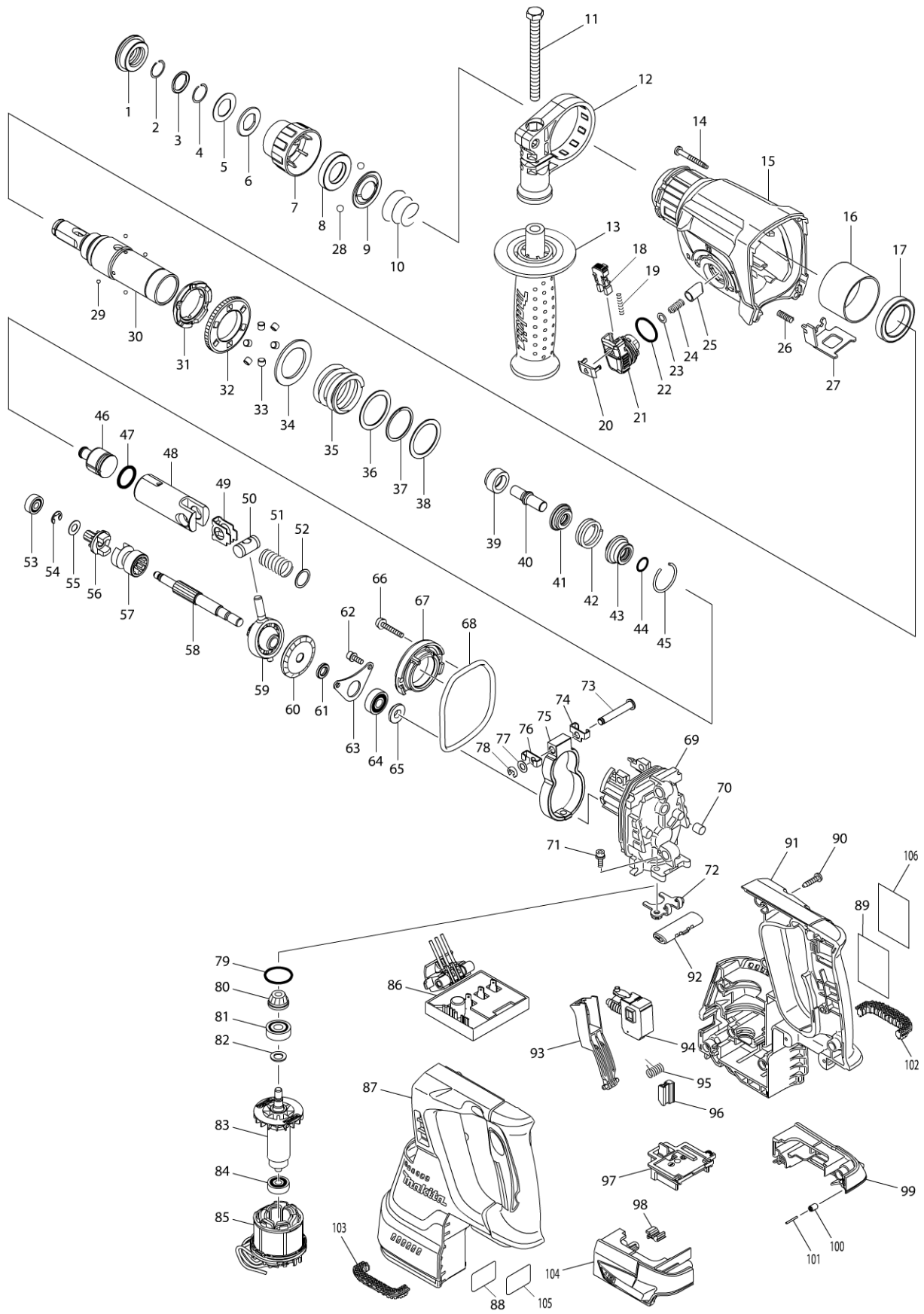


# Model No. DHR242 24MM CORDLESS COMBI. HAMMER



# Model No. DHR242 24MM CORDLESS COMBI. HAMMER

Item	Parts No.	Description	I/C	Qty	N/O	Opt. 1	Opt. 2	Note
001	286288-8	CAP 35		1				
002	233989-9	RING SPRING 14		1				
003	346221-3	WASHER 16		1				
004	233992-0	RING SPRING 15		1				
005	267437-6	FLAT WASHER 17		1				
006	424364-2	RUBBER WASHER 16		1				
007	451533-2	CHUCK COVER		1				
008	325813-1	RING 21		1				
009	346177-0	GUIDE WASHER		1				
010	233916-6	CONICAL COMP. SPRING 21-29		1				
011	266745-2	HEX.BOLT M8X90		1				
012	453129-5	GRIP BASE		1				
013	158057-6	GRIP 36 COMPLETE		1				
014	266351-3	TAPPING SCREW 4X35		4				
015	141229-0	GEAR HOUSING COMPLETE		1				
C10	213345-9	OIL SEAL 25		1				
C20	890903-4	INDICATION LABEL		1				
016	331890-3	CUP SLEEVE		1				
017	211294-4	BALL BEARING 6806LLU		1				
018	454112-5	LOCK BUTTON		1				
019	234264-6	COMPRESSION SPRING 3		1				
020	453131-8	CHANGE LEVER COVER		1				
021	453125-3	CHANGE LEVER		1				
022	213381-5	O RING 21		1				
023	253308-3	THIN WASHER 6		1				
024	234147-0	COMPRESSION SPRING 5		1				
025	325785-0	PUSH CORN		1				
026	233360-7	COMPRESSION SPRING 4		1				
027	346537-6	LOCK PLATE		1				
028	216022-2	STEEL BALL 7.0		2				
029	216019-1	STEEL BALL 3		4				
030	140265-3	TOOL HOLDER COMPLETE		1				
031	313149-0	DRIVING FLANGE		1	*			
031-1	332139-4	DRIVING FLANGE	S	1				
032	227232-6	SPUR GEAR 51		1	*			
032-1	227360-7	SPUR GEAR 51	S	1				
033	268226-2	PIN 6		6	*			
034	267414-8	FLAT WASHER 30		1	*			
035	234148-8	COMPRESSION SPRING 31		1				
036	267153-0	FLAT WASHER 30		1				
037	257932-4	SPIRO LOCK WASHER 30		1				
038	267153-0	FLAT WASHER 30		1				
039	325783-4	SLEEVE 9B		1				
040	325789-2	IMPACT BOLT A		1				
041	325792-3	WASHER 10		1				
042	234149-6	COMPRESSION SPRING 20		1				
043	325793-1	O-RING CASE B		1				
044	213073-6	O RING 9		1				

Please order the parts with a part number.

Print Date 19/03/2015

# Model No. DHR242 24MM CORDLESS COMBI. HAMMER

Item	Parts No.	Description	I/C	Qty	N/O	Opt. 1	Opt. 2	Note
045	233979-2	RING SPRING 28		1				
046	326139-4	STRIKER		1				
047	213258-4	O RING 17.5		1				
048	310345-1	PISTON CYLINDER		1				
049	346036-8	GUIDE PLATE		1				
050	324215-8	PISTON JOINT		1				
051	234098-7	COMPRESSION SPRING 14		1				
052	267447-3	FLAT WASHER 14		1				
053	211012-0	BALL BEARING 606ZZ		1				
054	257336-0	STOP RING EXT U-6		1				
055	253186-1	FLAT WASHER 7		1				
056	227231-8	SPUR GEAR 10		1				
057	331814-9	CLUTCH CAM A		1				
058	326140-9	CAM SHAFT		1				
059	219020-5	SWASH BEARING 10		1				
060	227588-7	SPIRAL BEVEL GEAR 32		1				
061	257323-9	RING 8		1				
062	922118-6	HEX. SOCKET HEAD BOLT M4X12		2				
063	346038-4	BEARING RETAINER B		1				
064	211032-4	BALL BEARING 608ZZ		1				
065	324212-4	RING 8		1				
066	922147-9	HEX. SOCKET HEAD BOLT M4X25		2				
067	141230-5	INNER SUPPORT COMPLETE		1				
068	213767-3	O-RING 75		1				
069	318810-4	INNER HOUSING		1				
070	443153-6	FELT		1				
071	922118-6	HEX. SOCKET HEAD BOLT M4X12		2				
072	346536-8	BEARING RETAINER A		1				
073	256536-9	FLAT FILLISTER HD PIN 6		1				
074	346538-4	WEIGHT HOLDER GUIDE		1				
075	313224-2	COUNTER WEIGHT		1				
076	346538-4	WEIGHT HOLDER GUIDE		1				
077	253726-5	FLAT WASHER 6		1				
078	961018-5	STOP RING E-5		1				
079	213008-7	O RING 22.4		1				
080	141458-5	SPIRAL BEVEL GEAR 11 COMPLETE		1				
081	210024-0	BALL BEARING 608LLU		1				
082	253835-0	FLAT WASHER 8		1				
083	619293-4	ROTOR		1				
084	210022-4	BALL BEARING 626DDW		1				
085	629922-1	STATOR		1				
086	620241-8	CONTROLLER		1				
087	187687-6	HOUSING SET		1	*			
D10		INC. 91			*			
087-1	183A34-5	HOUSING SET	<	1				
D10		INC. 91						
088	815B57-8	DHR242 SERIAL NO. LABEL		1				
089	815A38-6	DHR242 NAME PLATE		1				

Please order the parts with a part number.

Print Date 19/03/2015

# Model No. DHR242 24MM CORDLESS COMBI. HAMMER

Item	Parts No.	Description	I/C	Qty	N/O	Opt. 1	Opt. 2	Note
090	266326-2	TAPPING SCREW 4X18		10				
091	187687-6	HOUSING SET		1	*			
D10		INC. 87			*			
091-1	183A34-5	HOUSING SET	<	1				
D10		INC. 87						
092	453124-5	F/R CHANGE LEVER		1				
093	453123-7	SWITCH LEVER		1				
094	650709-0	SWITCH C3JW-1A-P		1				
095	233598-4	TORSION SPRING 6		1				
096	313226-8	OPENER		1				
097	644808-8	TERMINAL		1				
098	424476-1	CUSHION		1				
099	187377-1	BATTERY HOUSING SET		1				
C10	263005-3	RUBBER PIN 6		2				
D10		INC. 104						
100	263036-2	RUBBER PIN 5		1				
101	268184-2	PIN 1.5		1				
102	424473-7	CUSHION RUBBER		1				
103	424473-7	CUSHION RUBBER		1				
104	187377-1	BATTERY HOUSING SET		1				
C10	263005-3	RUBBER PIN 6		2				
D10		INC. 99						
105	893072-0	CLEAR LABEL		1				
106	890994-5	CLEAR LABEL		1				
A01	324219-0	DEPTH GAUGE		1				
A02I	***DC18RC	DC18RC FAST CHARGER		1				
A02K	***DC18RC	DC18RC FAST CHARGER		1				
A02L	***DC18RC	DC18RC FAST CHARGER		1				
A02M	821552-6	CONNECTOR PLASTIC CASE (TYPE4		1				
C10	453974-8	LATCH		4				
A02N	***DC18RC	DC18RC FAST CHARGER		1				
A02O	***DC18RC	DC18RC FAST CHARGER		1				
A02P	***DC18RC	DC18RC FAST CHARGER		1				
A02Q	***DC18RC	DC18RC FAST CHARGER		1				
A02R	***DC18RC	DC18RC FAST CHARGER		1				
A02S	***DC18RC	DC18RC FAST CHARGER		1				
A03I	194204-5	BATTERY BL1830 SET		2	*			
A03K	194204-5	BATTERY BL1830 SET		2	*			
A03L	194204-5	BATTERY BL1830 SET		2	*			
A03M	837677-6	INNER TRAY		1				
A03N	194204-5	BATTERY BL1830 SET		2	*			
A03O	196399-0	BATTERY BL1840 SET		2	*			
A03P	196399-0	BATTERY BL1840 SET		2	*			
A03Q	196399-0	BATTERY BL1840 SET		2	*			
A03R	196671-0	BATTERY BL1850 SET		2	*			
A03S	196671-0	BATTERY BL1850 SET		2	*			
A03-1I	194204-5	BATTERY BL1830 SET	O	2				
A03-1K	194204-5	BATTERY BL1830 SET	O	2				

Please order the parts with a part number.

Print Date 19/03/2015

# Model No. DHR242 24MM CORDLESS COMBI. HAMMER

Item	Parts No.	Description	I/C	Qty	N/O	Opt. 1	Opt. 2	Note
A03-1L	194204-5	BATTERY BL1830 SET	O	2				
A03-1N	194204-5	BATTERY BL1830 SET	O	2				
A03-1O	196399-0	BATTERY BL1840 SET	O	2				
A03-1P	196399-0	BATTERY BL1840 SET	O	2				
A03-1Q	196399-0	BATTERY BL1840 SET	O	2				
A03-1R	196671-0	BATTERY BL1850 SET	O	2				
A03-1S	196671-0	BATTERY BL1850 SET	O	2				
A04I	450128-8	BATTERY COVER		1				
A04K	450128-8	BATTERY COVER		1				
A04L	450128-8	BATTERY COVER		1				
A04M	802L14-5	DHR242ZJ PLASTIC CASE LABEL		2				
A04N	450128-8	BATTERY COVER		1				
A04O	450128-8	BATTERY COVER		1				
A04P	450128-8	BATTERY COVER		1				
A04Q	450128-8	BATTERY COVER		1				
A04R	450128-8	BATTERY COVER		1				
A04S	450128-8	BATTERY COVER		1				
A05I	141401-4	PLASTIC CASE COMPLETE		1				
C10	162271-8	LATCH		2				
C20	890904-2	INDICATION LABEL		1				
A05K	141402-2	PLASTIC CASE COMPLETE		1				
C10	162271-8	LATCH		2				
C20	890904-2	INDICATION LABEL		1				
A05L	821552-6	CONNECTOR PLASTIC CASE (TYPE4		1				
C10	453974-8	LATCH		4				
A05M	802L34-9	DHR242ZJ INDICATION LABEL		1				
A05N	821552-6	CONNECTOR PLASTIC CASE (TYPE4		1				
C10	453974-8	LATCH		4				
A05O	141401-4	PLASTIC CASE COMPLETE		1				
C10	162271-8	LATCH		2				
C20	890904-2	INDICATION LABEL		1				
A05P	821552-6	CONNECTOR PLASTIC CASE (TYPE4		1				
C10	453974-8	LATCH		4				
A05Q	821552-6	CONNECTOR PLASTIC CASE (TYPE4		1				
C10	453974-8	LATCH		4				
A05R	141401-4	PLASTIC CASE COMPLETE		1				
C10	162271-8	LATCH		2				
C20	890904-2	INDICATION LABEL		1				
A05S	821552-6	CONNECTOR PLASTIC CASE (TYPE4		1				
C10	453974-8	LATCH		4				
A06I	802L23-4	DHR242RFE PLASTIC CASE LABEL		2				
A06K	802L26-8	DHR242RFEV PLASTIC CASE LABEL		2				
A06L	837677-6	INNER TRAY		1				
A06N	837677-6	INNER TRAY		1				
A06O	802L17-9	DHR242RME PLASTIC CASE LABEL		2				
A06P	837677-6	INNER TRAY		1				
A06Q	837677-6	INNER TRAY		1				
A06R	804J02-6	DHR242RTE PLASTIC CASE LABEL		2				

Please order the parts with a part number.

Print Date 19/03/2015

**Model No. DHR242 24MM CORDLESS COMBI. HAMMER**

Item	Parts No.	Description	I/C	Qty	N/O	Opt. 1	Opt. 2	Note
A06S	837677-6	INNER TRAY		1				
A07K	***DX01	DUST EXTRACTION SYSTEM		1				
D10		COMPO-PARTS						
D20		INC. A08						
A07L	802L13-7	DHR242RFJ PLASTIC CASE LABEL		2				
A07N	802L15-3	DHR242RFJV PLASTIC CASE LABEL		2				
A07P	802L18-7	DHR242RMJ PLASTIC CASE LABEL		2				
A07Q	802L29-2	DHR242RMJV PLASTIC CASE LABEL		2				
A07S	804J04-2	DHR242RTJ PLASTIC CASE LABEL		2				
A08K	424474-5	SEALING CAP		5				
A08L	802L33-1	DHR242RFJ INDICATION LABEL		1				
A08N	802L35-7	DHR242RFJV INDICATION LABEL		1				
A08P	802L36-5	DHR242RMJ INDICATION LABEL		1				
A08Q	802K98-7	DHR242RMJV INDICATION LABEL		1				
A08S	804J03-4	DHR242RTJ INDICATION LABEL		1				
A09N	***DX01	DUST EXTRACTION SYSTEM		1				
D10		COMPO-PARTS						
D20		INC. A10						
A09Q	***DX01	DUST EXTRACTION SYSTEM		1				
D10		COMPO-PARTS						
D20		INC. A10						
A10N	424474-5	SEALING CAP		5				
A10Q	424474-5	SEALING CAP		5				