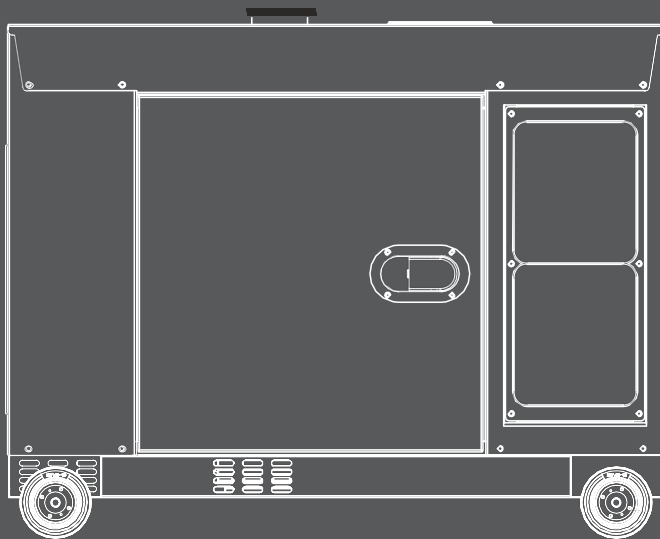


**ENERGY**<sup>®</sup>  
Power for life



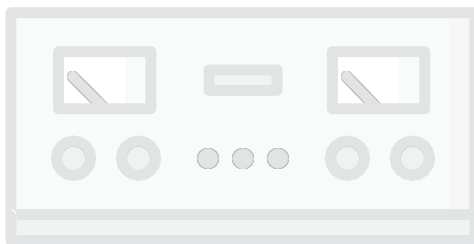
SE

# Manual Elverk T9000FULL

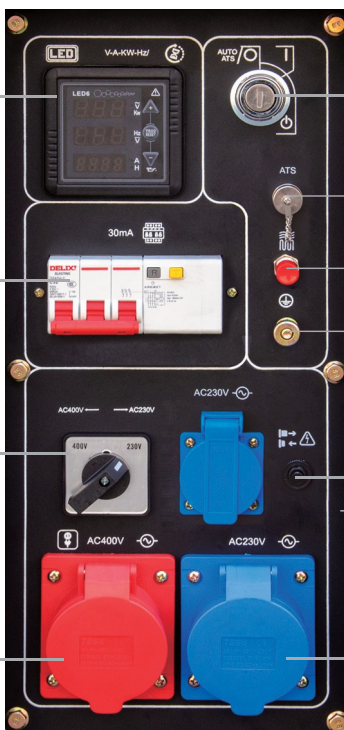




## Komponenter i elpanelen



LED6-display



Nyckelstart

Brytare

ATS-uttag

Fövärmningsknapp

Omkopplare

Jordterminal

Överbelastning

Enfasuttag  
(230V 16A)

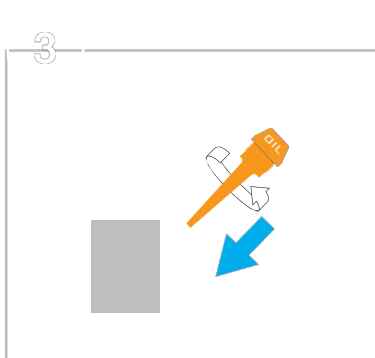
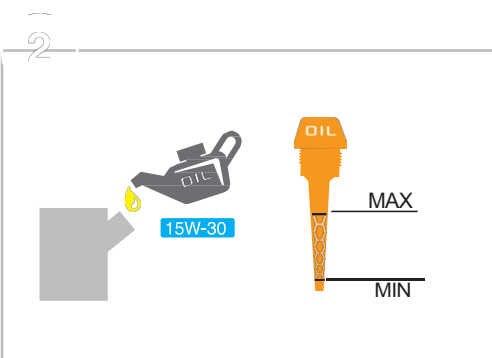
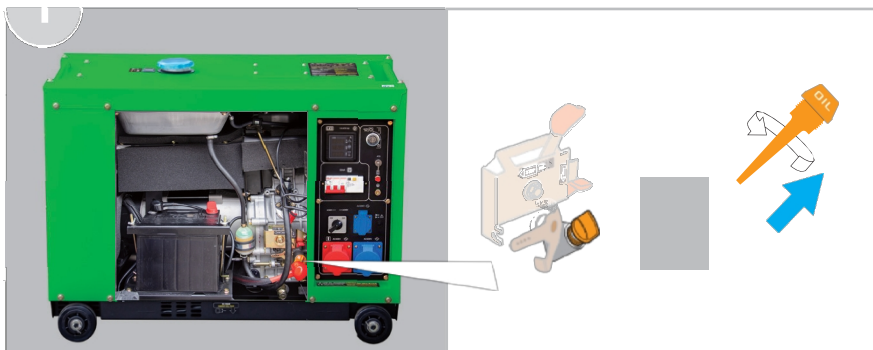
Trefasuttag

(400V 16A)

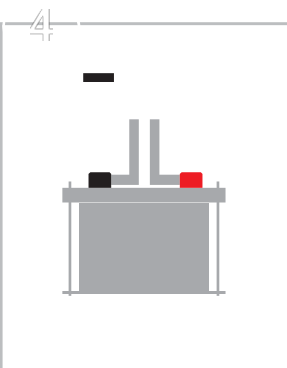
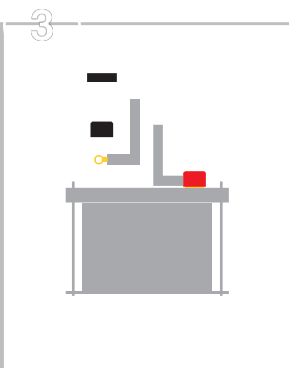
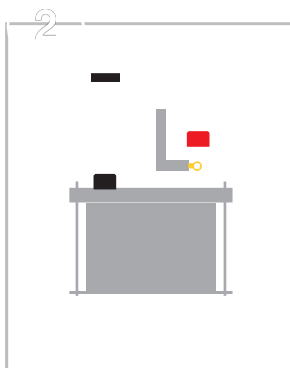
Enfasuttag

(230V 32A)

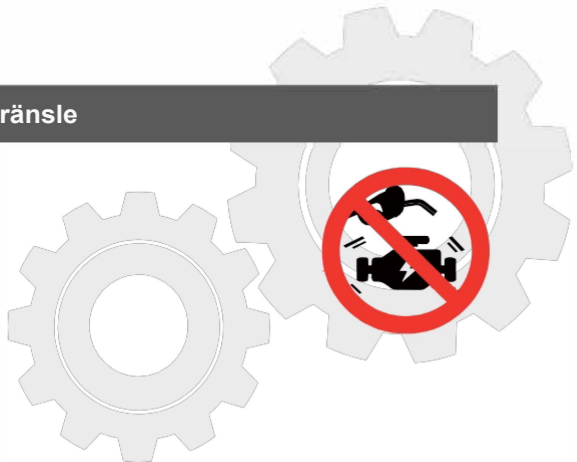
# Förberedelser före start – Oljepåfyllning



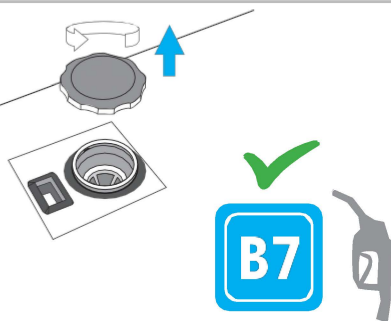
## Förberedelser före start – Anslut batterikabel



## Förberedelse innan start - Fyll på bränsle



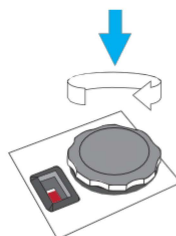
1



2



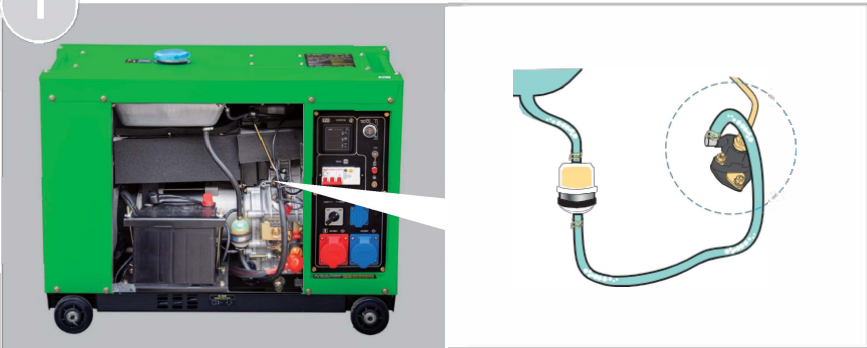
3



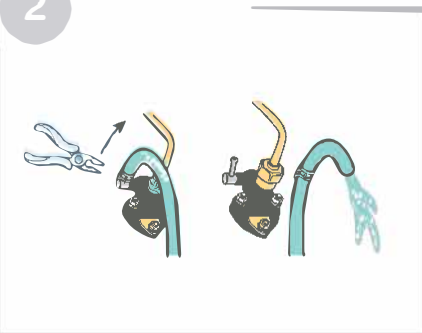
## Förberedelse före start – Lufta bränsleledningen



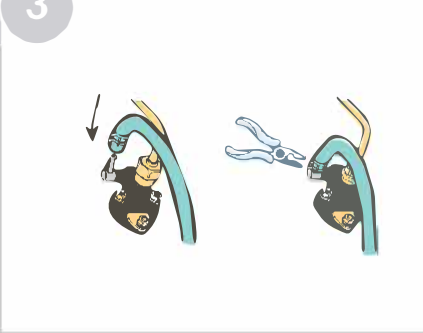
1



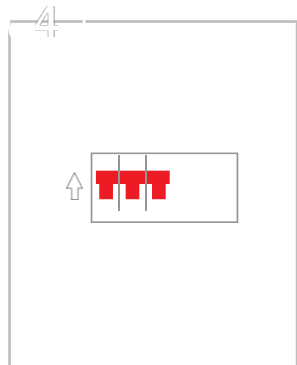
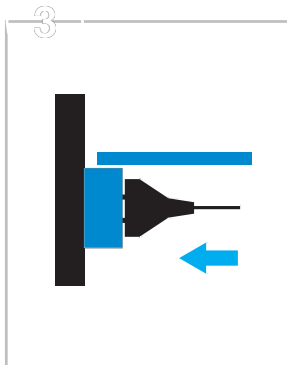
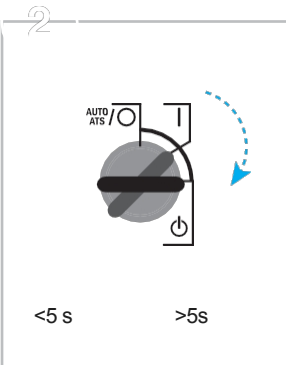
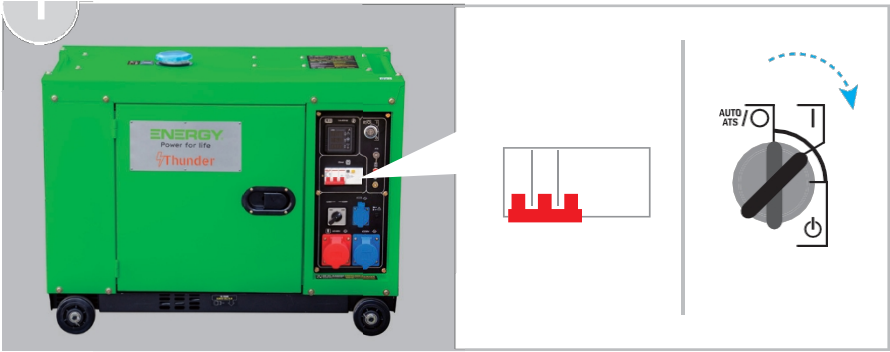
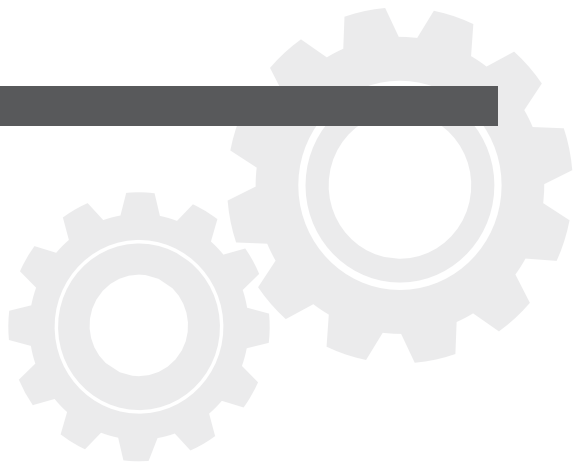
2



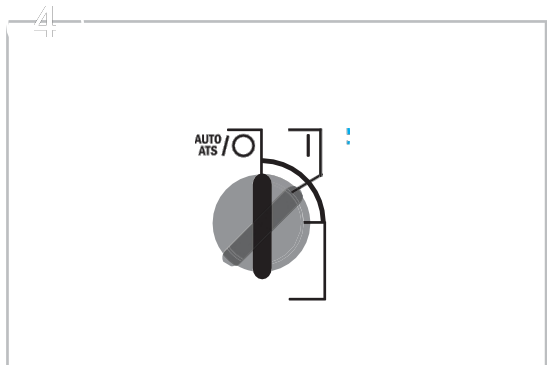
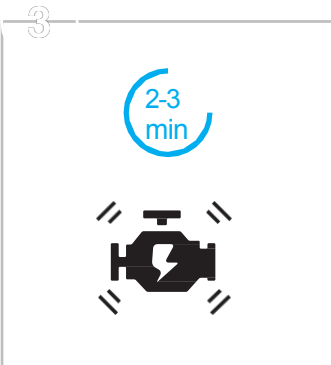
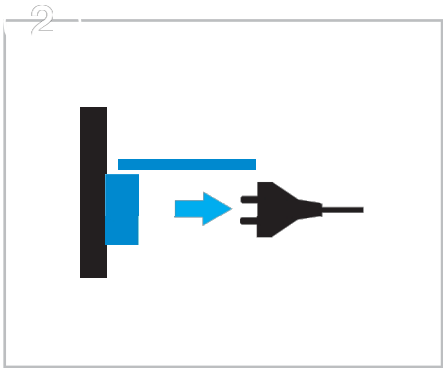
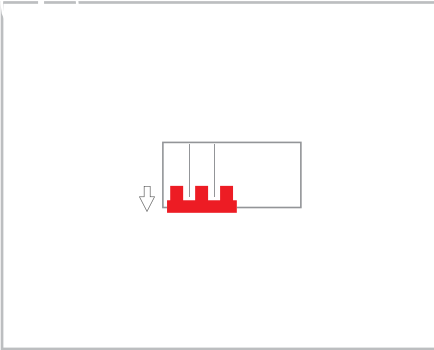
3



# Drift – NYCKELSTART



# Drift – STOP



## Underhåll – Oljebyte



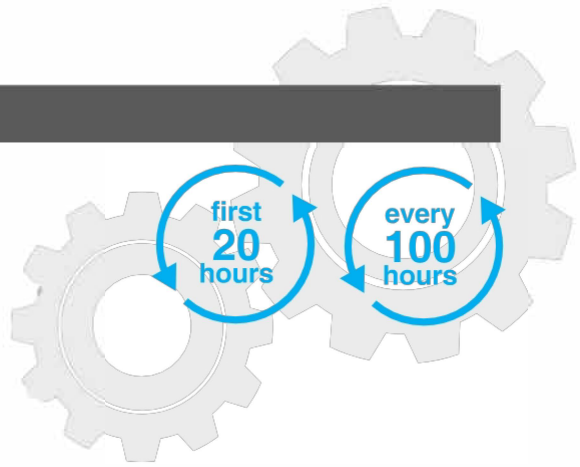
Placera ett uppsamlingskärl under oljeavtappningspluggen.

Skruva av oljestickan.

Ta bort oljeavtappningspluggen.

Låt all olja rinna ut ur motorn.

Fyll motorn med ny olja.



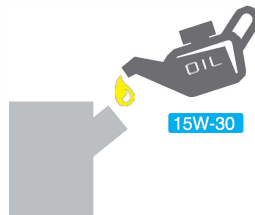
1



2



3



## Underhåll – Rengöring av oljefilter



Ta bort det primära oljefiltret.

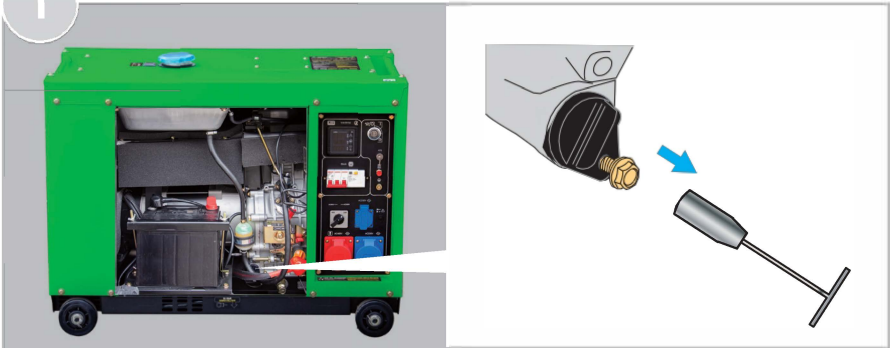
Rengör oljefiltret med en borste och diesel.

Sätt tillbaka oljefiltret i motorn och dra åt skruven.

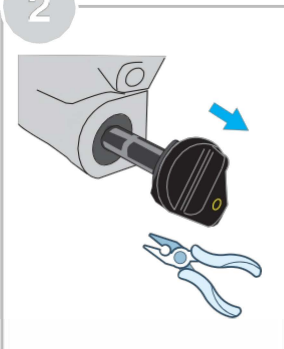
Kontrollera att O-ringens inte är skadad.

every  
100  
hours

1



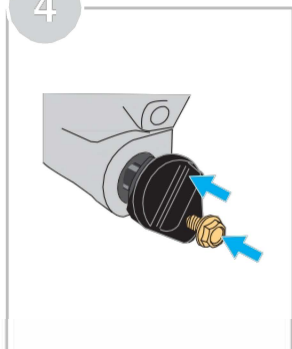
2



3



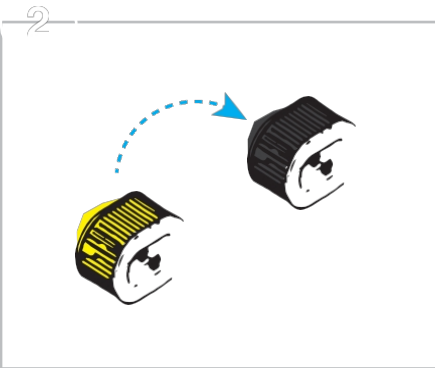
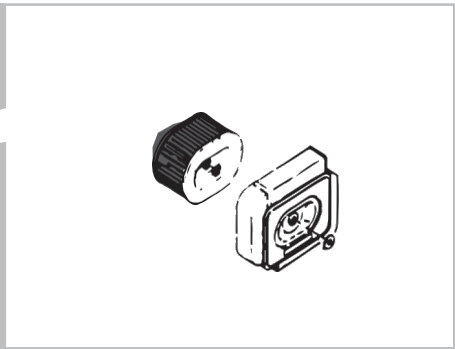
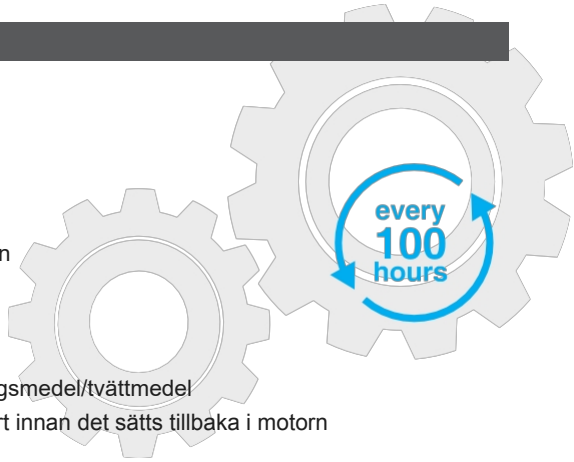
4



## Underhåll – Luftfilter



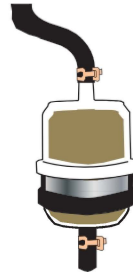
1. Ta bort metallkåpan på kåpan
2. Ta bort skruven på utsidan av luftfilterkåpan
3. Ta bort skruven på filtret
4. Ta bort filterelementet
5. Rengör eller byt ut enligt anvisningarna
6. Rengör aldrig filterelementet med rengöringsmedel/tvättmedel
7. Se till att luftfilterelementet är tillräckligt torrt innan det sätts tillbaka i motorn
8. Dra åt skruven på luftfilterelementet
9. Sätt tillbaka luftfilterkåpan och dra åt skruven
10. Sätt tillbaka metallkåpan och dra åt skruven för att fästa kåpan på motorhuven.



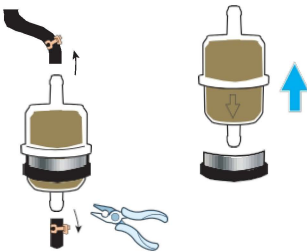
# Underhåll - Bränslefilter



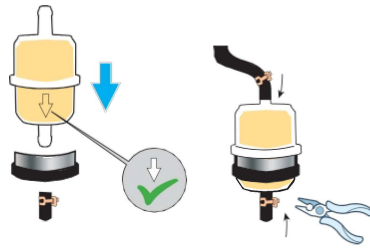
1



2



3



**ENERGY®**

Power for life

ENERGY SRL

Via del Progresso 35

36054 Montebellò Vicenti00 (VI) Italian

Tel. +39 0444 450422